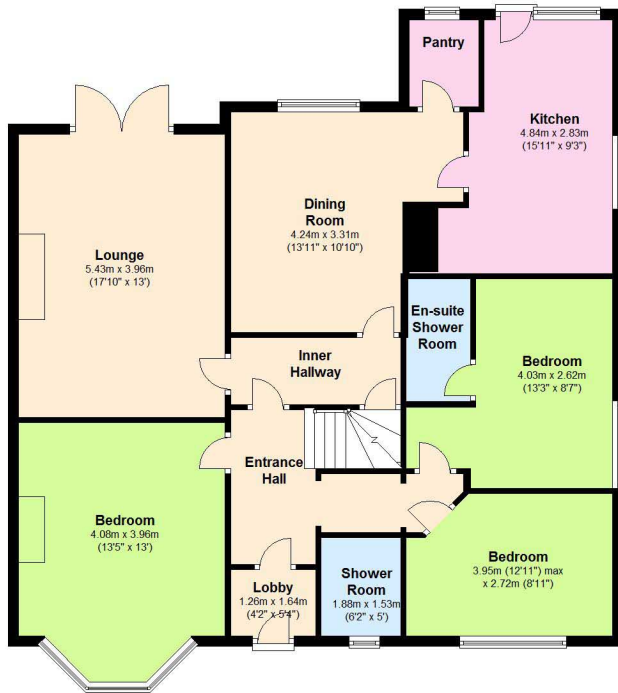


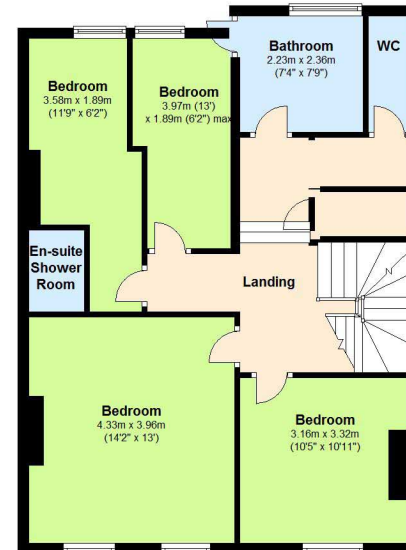
Ground Floor

Approx. 121.0 sq. metres (1302.9 sq. feet)



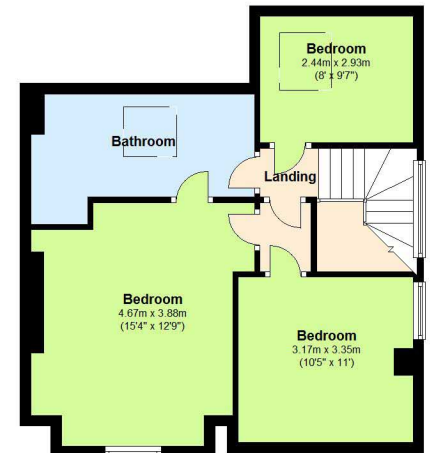
First Floor

Approx. 71.9 sq. metres (774.2 sq. feet)



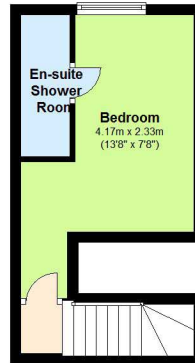
Second Floor

Approx. 52.9 sq. metres (569.0 sq. feet)



Basement

Approx. 18.3 sq. metres (196.7 sq. feet)



Total area: approx. 264.1 sq. metres (2842.7 sq. feet)

This floor plan is intended as a guide to layout and is for identification purposes only. It is not to scale and any measurements should not be relied upon. Plan produced using PlanUp.