

Landscape Plan

This Landscape Plan has been prepared as part of the Discharge of Planning Condition 4 (Hard and Soft Landscape Works) for a Planning Approval (Ref: 4/00518/12/MFA) at Adeyfield Free Church, Leverstock Green Road, Hemel Hempstead, HP2 4HJ. This approval is for the 'Demolition of church and redevelopment of site for 14 houses, comprising a mix of 2, 3 and 4 bed houses as semis, terraced and detached dwellings in two and three storeys, with parking, access road and amenity space'.

Landscape Philosophy

To provide a landscape design which reflects the residential context of the site and the existing built form and public use around the site. The development will be screened with tree, hedge and shrub planting. There will be formal planting areas associated with the residential garden areas and communal areas within the main body of the development. Overall the development will provide a range of wildlife habitats across the site which will increase the bio-diversity of the site as well as providing an attractive setting for the development. It will include replacement trees for those removed as part of the development.

For information on Arboricultural issues refer to the Arboricultural Report as part of the submissions for the original Planning Application.

Plan Details

Hard Material Specification

Surfacing Materials and Fencing are as to be used in the areas as shown on the Landscape Plan, as indicated on the Key and as set out below.

Hard Surface Materials

Main Access Road and Footpaths

Tarmacadam laid to a standard roadway and footpath construction.

Residential Driveways and Footpaths

Used to the frontages of dwellings and other buildings. Marshalls Tegula – 'Traditional' or similar to be approved. Three sized blocks laid in a random course.

Patio Areas and Footpaths

Used to the rear garden areas of dwellings or other buildings. Marshalls Indian Sandstone Paving Slabs – 'Brown Multi' or similar to be approved. Five sized slabs laid in a random pattern.

Granite Setts

Granite setts 100 x100 mm may be used to define areas between different surfaces. Alternatively medium sized blocks of Marshalls Tegula 'Traditional' may be used.

Fencing Specification

Close Board Fencing

1.83 m height x 1.83 m width close board fence panels with 100 mm vertical pales. Panels to be supported on 2700 mm x 100 x 100 mm slotted posts concreted into the ground to approximately 600 mm. With gravelboard 1.83m width x 150mm height x 25mm thickness. Suppliers to include Jacksons Timber e-mail: www.jacksons-fencing.co.uk and Telephone: 01233 750393.

Wire Mesh Fencing

To provide a secure site boundary along the boundaries with Leverstock Green Road and 414. This will be used in association with proposed hedge planting to provide a softer and less dominant appearance. To be between 1.51.8 m height. Green PVC coated steel hexagonal wire. 600 and 900 mm widths with 25 mm square mesh aperture. To be fixed to 75 x 75 mm timber posts.

Plant Specifications

Tree Specification

Amelanchier 'Robin Hill' – 3 no. – 10–12 cm girth and 300–350 cm height at planting
Crataegus laevigata 'Pauls Scarlet' – 2 no. – 10–12 cm girth and 300–350 cm height at planting
Malus 'Evereste' – 1 no. – 10–12 cm girth and 300–350 cm height at planting
Prunus 'Spire' – 2 no. – 10–12 cm girth and 300–350 cm height at planting
Quercus robur (English Oak) – 1 no. – 14–16 cm girth and 425–600 cm height at planting
Sorbus aucuparia – 1 no. – 10–12 cm girth and 300–350 cm height at planting
Sorbus 'Beissneri' – 2 no. – 10–12 cm girth and 300–350 cm height at planting

Hedging Specifications

Escallonia Hedging (Escallonia 'Apple Blossom')

Plant Escallonia as a hedge at 75 cm centres. Plants to be 3 Lt, 40–60 cm. Prune after flowering to encourage a second flush of flowers. Prune lightly in spring or as necessary.

Privet Hedging (Ligustrum ovalifolium)

Plant Privet as a hedge at 30 cm centres. Plants to be 60–80 cm and bare root. Prune as necessary to maintain vigour and hedge form.

Laurel Hedging (Prunus laurocerasus 'Rotundifolia')

Plant Laurel as a hedge at 60 cm centres. Plants to be 5 Lt, 60–80 cm. Prune as necessary to 1.2–1.8 m height to maintain vigour and hedge form.

Photinia Hedging (Photinia x fraseri 'Red Robin')

Plant Photinia as a hedge at 60 cm centres. Plants to be 5 Lt, 60–80 cm. Prune as necessary to maintain vigour and hedge form.

Pyracantha Hedging (Pyracantha 'Orange Glow')

Plant as a hedge at 50 cm centres. Plants to be 5 Lt, 60–80 cm. Prune as necessary to maintain vigour and hedge form.

Note

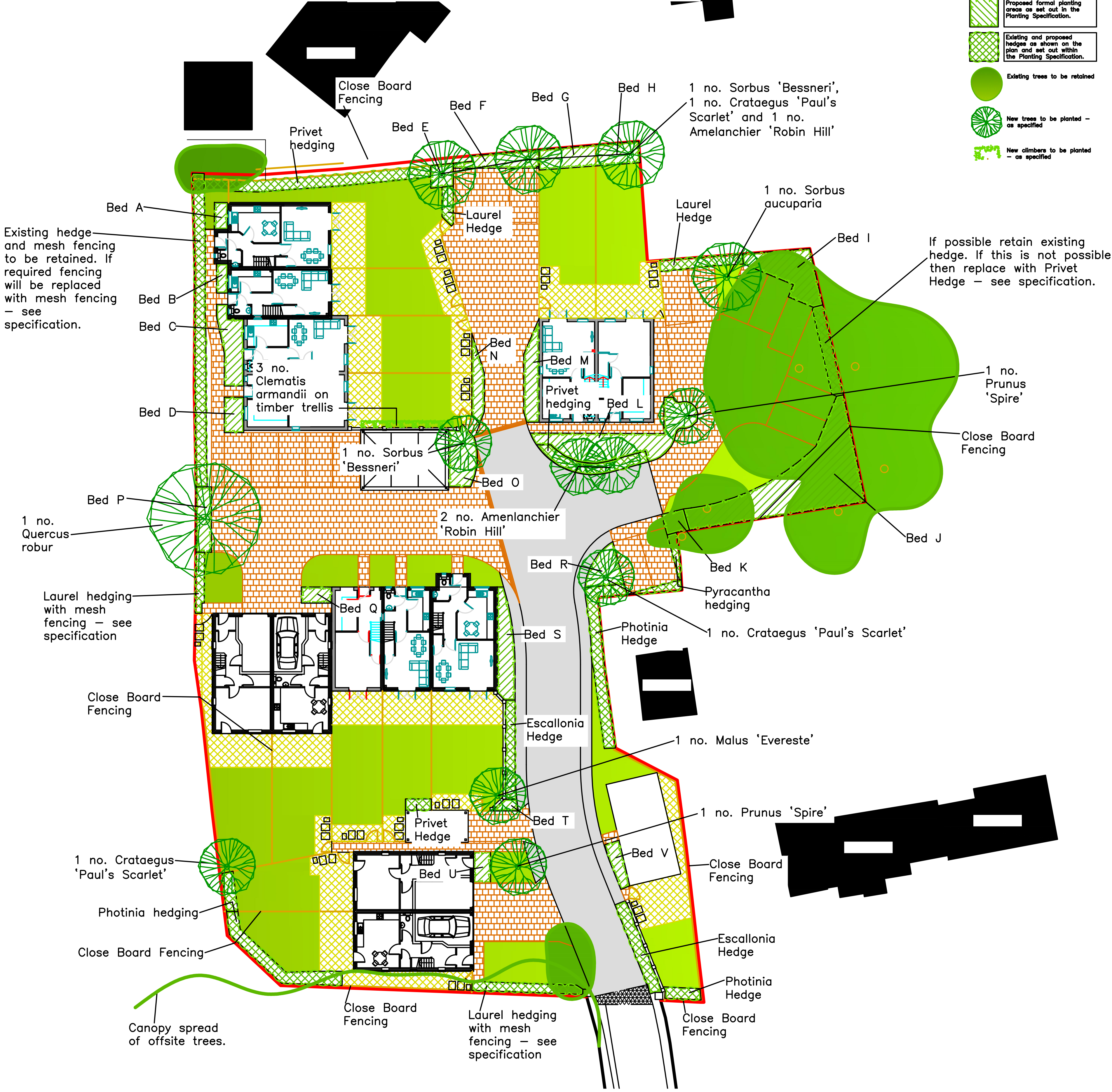
This drawing is copyrighted and cannot be copied, reproduced or altered unless written consent has been received first.

Based on plans provided by Nett Asset Architects, Herts.

The original of this drawing was produced in colour – a monochrome copy should not be relied upon.

Plant substitutions may be made depending on availability at time of planting. Plant species used will reflect the overall design ethos of the development.

Trees are shown at their anticipated maximum canopy spreads to gauge their suitability within the space available within the proposed site layout.



Plant Specifications (Continued)

Planting Bed Specifications

Bed A
Geranium macrorrhizum 'Bevans Variety' – 3 no. – 1 Lt, Vegetative
Hebe 'Nicola's Blush' – 1 no. – 5 Lt, 60–80 cm, Bushy
Spiraea 'Goldflame' – 2 no. – 3 Lt, 20–30 cm, Bushy
Bed B
Geranium 'Johnsons Blue' – 3 no. – 1 Lt, Vegetative
Hebe 'Autumn Joy' – 2 no. – 3 Lt, 30–40 cm, Branched
Viburnum davidii – 1 no. – 5 Lt, 40–60 cm, Bushy
Bed C
Cistus 'Silver Pink' – 4 no. – 5 Lt, 30–40 cm, Bushy
Heuchera 'Palace Purple' – 4 no. – 1 Lt, Vegetative
Lavendula angustifolia – 4 no. – 5 Lt, 40–60 cm, Bushy
Penstemon 'Apple Blossom' – 4 no. – 1 Lt, Vegetative
Potentilla fruticosa 'Elizabeth' – 2 no. – 3 Lt, 30–40 cm, Branched
Rosmarinus officinalis – 1 no. – 5 Lt, 40–60 cm, Bushy
Bed D
Caryopteris 'Kew Blue' – 2 no. – 3 Lt, 30–40 cm, Branched
Euonymus 'Emerald 'n' Gold' – 3 no. – 3 Lt, 40–60 cm, Branched
Hebe 'Nicola's Blush' – 2 no. – 5 Lt, 60–80 cm, Bushy

Plant Specifications (Continued)

Planting Bed Specifications

Bed E
Choisya ternata – 2 no. – 5 Lt, 40–60 cm, Bushy
Bed F
Elaeagnus pungens 'Maculata' – 2 no. – 3 Lt, 40–60 cm, Branched
Viburnum 'Anne Russell' – 3 no. – 5 Lt, 40–60 cm, Branched
Bed G
Ceanothus 'Autumnal Blue' – 3 no. – 5 Lt, 40–60 cm, Bushy
Viburnum tinus 'Variegatum' – 2 no. – 7.5 Lt, 40–60 cm, Bushy
Bed H
Choisya ternata 'Aztec Pearl' – 2 no. – 5 Lt, 40–60 cm, Bushy
Weigela 'Bristol Ruby' – 2 no. – 5 Lt, 60–80 cm, Branched

Plant Specifications (Continued)

Planting Bed Specifications

Bed I
Plant in groups of 3 or 4 no. Plant lower growing species – Cornus and Forsythia to the front of the bed.
Berberis darwinii – 3 no. – 3 Lt, 30–40 cm, Bushy
Cornus 'Midwinter Fire' – 4 no. – 3 Lt, 60–80 cm, Branched
Forsythia x intermedia – 4 no. – 5 Lt, 60–60 cm, Branched
Philadelphus coronarius 'Aureus' – 3 no. – 5 Lt, 60–80 cm, Bushy

Bed J

Plant in random groups of 3 or 4 no. Plant lower growing species – Hypericum, Skimmia and Viburnum – to front of the bed.
Choisya ternata – 7 no. – 5 Lt, 40–60 cm, Bushy
Cornus 'Aurea' – 7 no. – 3 Lt, 60–80 cm, Branched
Elaeagnus pungens 'Maculata' – 2 no. – 3 Lt, 40–60 cm, Branched
Hypericum 'Hidcote' – 7 no. – 3 Lt, 30–40 cm, Bushy
Skimmia japonica 'Rubella' – 3 no. – 5 Lt, 40–60 cm, Branched
Viburnum davidii – 7 no. – 5 Lt, 40–60 cm, Bushy
Weigela 'Bristol Ruby' – 7 no. – 5 Lt, 60–80 cm, Branched

Plant Specifications (Continued)

Planting Bed Specifications

Bed K
Potentilla fruticosa 'Elizabeth' – 4 no. – 3 Lt, 30–40 cm, Branched
Bed L
Plant lower growing species – Vinca and Spiraea – to the front of the bed
Euonymus 'Emerald 'n' Gold' – 6 no. – 3 Lt, 40–60 cm, Branched
Hebe 'Nicola's Blush' – 6 no. – 5 Lt, 60–80 cm, Bushy
Potentilla fruticosa 'Red Ace' – 6 no. – 3 Lt, 30–40 cm, Branched
Sarcococca humilis – 3 no. – 5 Lt, 20–30 cm, Bushy
Spiraea 'Goldflame' – 6 no. – 3 Lt, 20–30 cm, Bushy
Vinca minor 'Aureomarginata' – 8 no. – 1 Lt, Vegetative

Bed M

Berberis wilsonii – 3 no. – 3 Lt, 40–60 cm, Branched
Hebe canterburiensis – 4 no. – 3 Lt, 30–40 cm, Branched
Lavendula angustifolia – 3 no. – 5 Lt, 40–60 cm, Bushy
Rosmarinus officinalis – 1 no. – 5 Lt, 40–60 cm, Bushy

Bed N

Potentilla fruticosa 'Elizabeth' – 2 no. – 3 Lt, 30–40 cm, Branched
Sarcococca humilis – 2 no. – 5 Lt, 20–30 cm, Bushy
Viburnum davidii – 2 no. – 5 Lt, 40–60 cm, Bushy

Bed O

Berberis thunbergii 'Aurea' – 3 no. – 3 Lt, 40–60 cm, Branched
Cornus 'Midwinter Fire' – 3 no. – 3 Lt, 60–80 cm, Branched
Forsythia x intermedia – 3 no. – 5 Lt, 60–60 cm, Branched

Bed P

Philadelphus 'Beauclerk' – 2 no. – 5 Lt, 60–80 cm, Bushy
Viburnum tinus – 2 no. – 7.5 Lt, 40–60 cm, Bushy

Bed Q

Euonymus 'Emerald 'n' Gold' – 3 no. – 3 Lt, 40–60 cm, Branched
Hebe 'Mrs Winder' – 2 no. – 3 Lt, 40–60 cm, Bushy

Bed R

Skimmia 'Kew Green' – 3 no. – 5 Lt, 40–60 cm, Bushy
Weigela 'Mont Blanc' – 3 no. – 5 Lt, 60–80 cm, Branched

Bed S

Aucuba 'Rozannie' – 3 no. – 3 Lt, 40–60 cm, Branched
Berberis wilsonii – 3 no. – 3 Lt, 40–60 cm, Branched
Hebe 'Great Orme' – 2 no. – 3 Lt, 40–60 cm, Bushy
Philadelphus 'Manteau d'Hermine' – 3 no. – 5 Lt, 60–80 cm, Bushy
Spiraea 'Anthony Waterer' – 3 no. – 3 Lt, 30–40 cm, Bushy

Bed T

Sarcococca humilis – 2 no. – 5 Lt, 20–30 cm, Bushy

Bed U

Potentilla fruticosa 'Elizabeth' – 1 no. – 3 Lt, 30–40 cm, Branched
Sarcococca humilis – 2 no. – 5 Lt, 20–30 cm, Bushy
Viburnum davidii – 2 no. – 5 Lt, 40–60 cm, Bushy

Bed V

Geranium 'Johnsons Blue' – 4 no. – 1 Lt, Vegetative
Hebe canterburiensis – 3 no. – 3 Lt, 30–40 cm, Branched
Lavendula angustifolia – 2 no. – 5 Lt, 40–60 cm, Bushy

Climbers

Plant the following climbers on trellis attached to garage wall along the garden boundary as shown on the plan. Climbers are proposed to soften and screen the garage.
Clematis armandii – 3 no. 80–100 cm height, 10 Lt, several shoots.

General Specification

All planting stock should comply with the Horticultural Trade Association National Plant specification. All planting preparation, handling, planting & maintenance should be in accordance with CPSE Code for Handling and Establishing plants.

All trees and shrubs to comply with BS 3936 Part 1 1992, planted to BS 4043:1989 and BS 4428:1989. Topsoil will conform to BS 3882 2007 unless otherwise stated. Topsoil incorporated into planting beds to be gently mounded towards the centre of each bed to allow for settlement.

On completion of planting the whole area of the shrub and herbaceous beds should be mulched with 75mm consolidated thickness of medium textured decorative grade natural pine bark having first been prepared in accordance with the specification.

Adeyfield Free Church, Leverstock
Green Road, Hemel Hempstead,
Hertfordshire, HP2 4HJ

Drawing Title:
Landscape Plan

Drawing No: DOCLP/AFCLGRHH/
020 A

Client: Adeyfield Free Church

Scale: 1:200 @ A0

Drawn By: drc

Date: January 2016

DCCLA

David Clarke BSc (Hons) PD Arb (RFS) CMLI M Arbor A
Offices in Hertfordshire and Warwickshire
Head Office: Willowbrook House, Church Lane,
Fillongley, Warwickshire, CV7 8EW
M: (07775) 650 835 or (01676) 541 833
e.mail: info@dccla.co.uk